


Nature management in a climate perspective

- Experiences from Aquarius

Project Manager, Irene Wiborg,
Knowledge Centre for Agriculture in Denmark

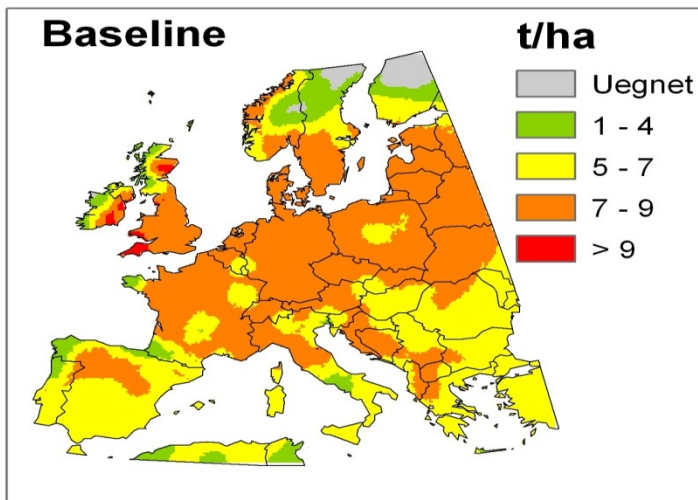
A wide-angle photograph of a flooded agricultural field. The foreground is filled with tall, dry, golden-brown grass. The middle ground is a large, flat area of water reflecting the sky, with some submerged vegetation and a few wooden posts. In the background, there are rolling green hills, a line of trees, and several power lines stretching across the horizon under a clear blue sky with a few small white clouds.

Aquarius: a unique partnership
creates common knowledge about
the challenges for the environment
and for farming in a changed climate

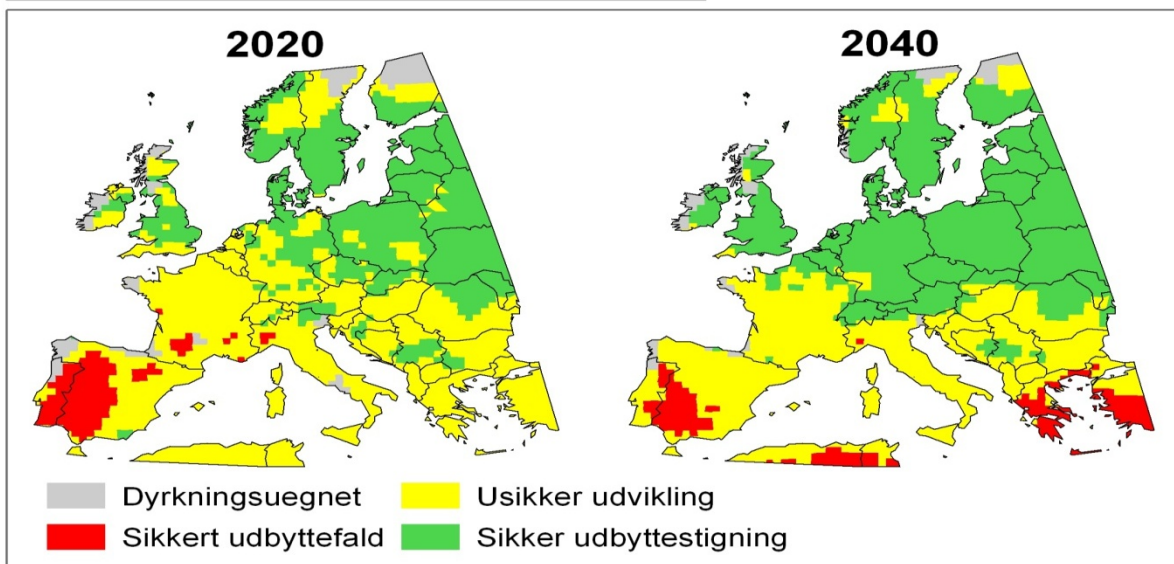
A unique partnership creates common knowledge about the challenges for the environment and for farming in a changed climate

Important for cooperation

- A common starting point – a knowledge based foundation.
- Knowledge – preferable visualised – showing the consequences of climate changes for farming and for the environment.
- Based on knowledge new innovative ideas for adaptation can be created – often we can create solutions.



Source: Aarhus University, Jørgen E. Olesen et al.



Results >>

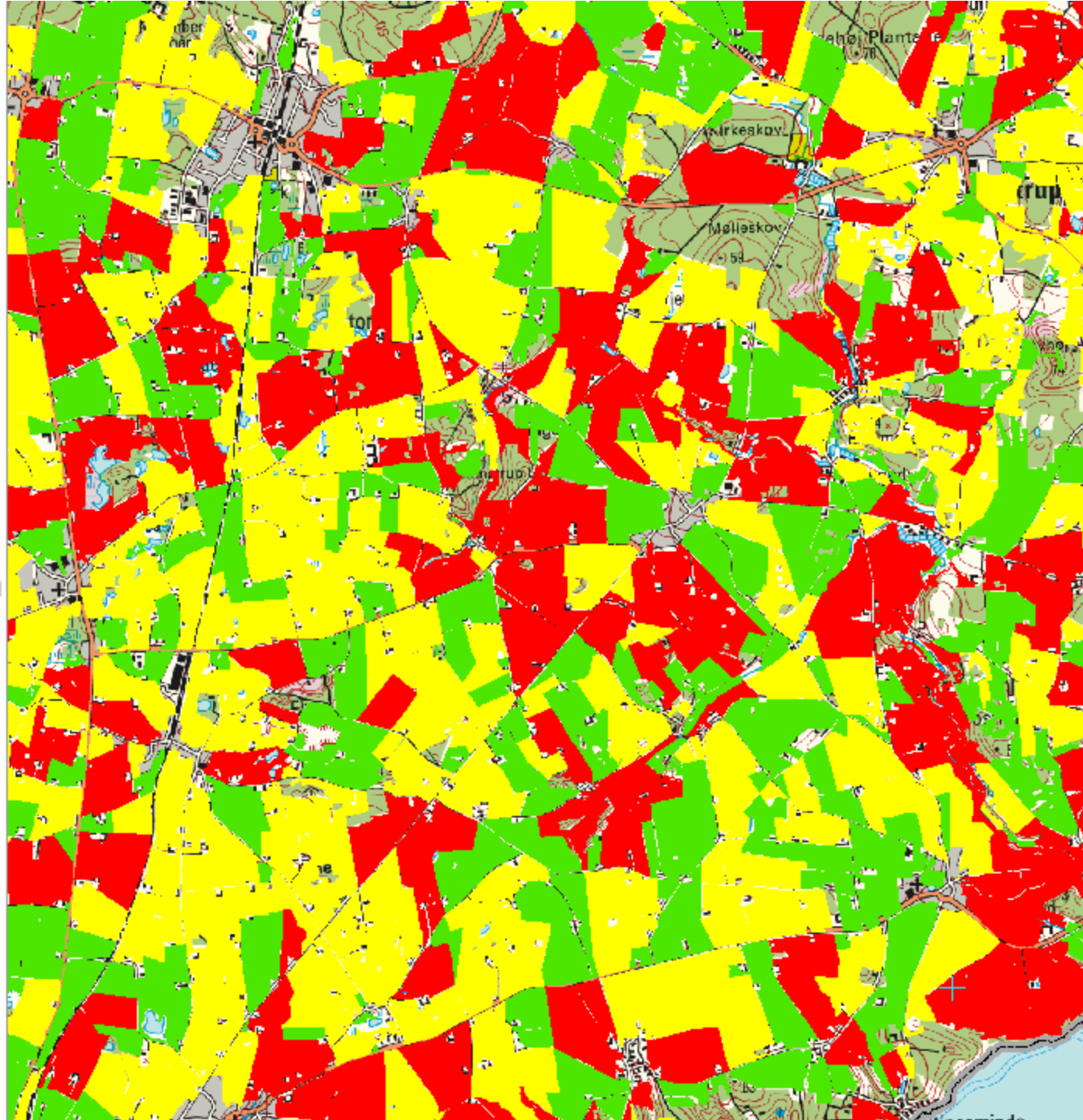
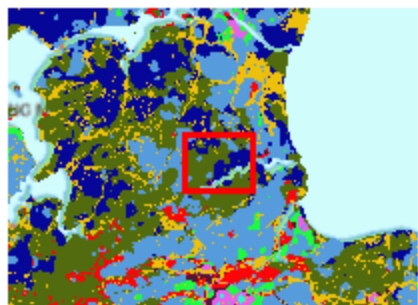
Map Contents >>

☒ PindeksDK

- ☐ Binder
- ☐ Opland
- ☐ Overfladevand
- ☐ Blok2003
- ☐ Erosionsrisiko
- ☒ P Indeks
 - ☒ PI Erosion
 - 0,0000 - 50,0000
 - 50,0001 - 90,0000
 - 90,0001 - 100,0000
 - ☐ PI Overflade
 - ☐ PI Matrix
 - ☐ PI Makropore
- ☐ Jordbund
 - ☐ lavbund
 - ☐ JB nummer
 - ☐ Fosforbinding
- ☐ Makropore
- ☒ Baggrundkort

< III >

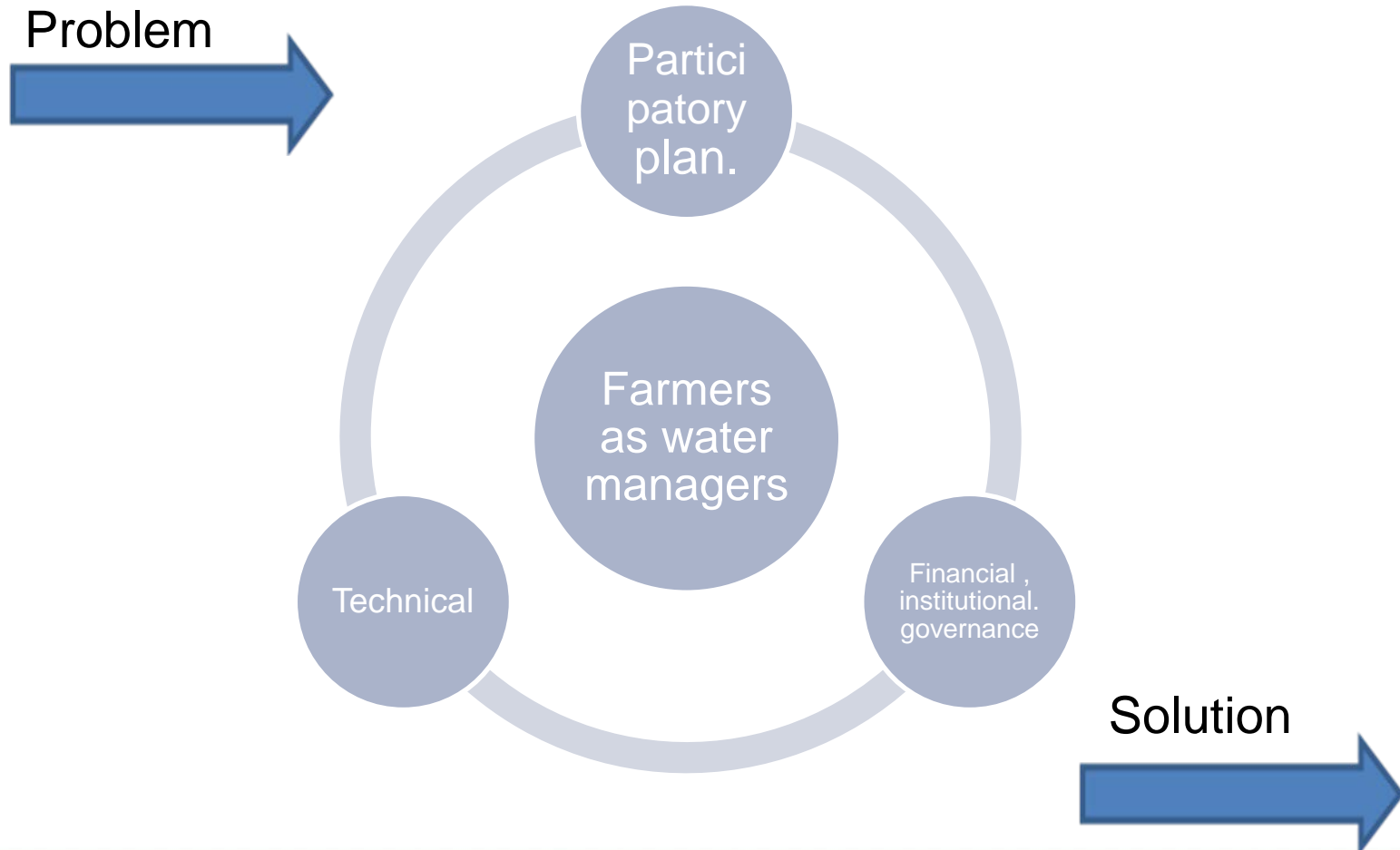
Overview >>



Observations from a practitioners point of view – knowledge transfer – N retention risk



How to find the win-win solutions?



More information at the

AQUARIUS End Conference

12 – 13 October

[HTTP://WWW.AQUARIUS-NSR.EU/](http://www.aquarius-nsr.eu/)